

# Lingo N21

## Quick Start Guide

Schnellanleitung  
Guide de démarrage rapide  
Guida Rapida all'uso  
Guía de inicio rápido  
クイックスタートガイド

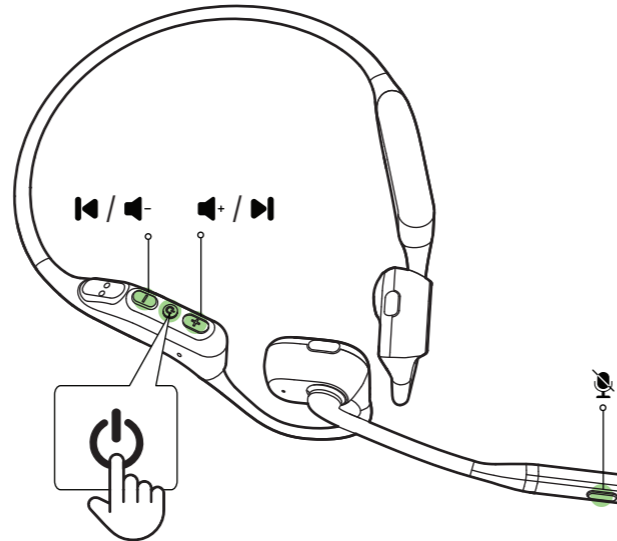


User Manual & FAQs



## Product Overview

Produktübersicht | Vue d'ensemble du produit |  
Panoramica Prodotto | Descripción general del  
producto | 製品概要



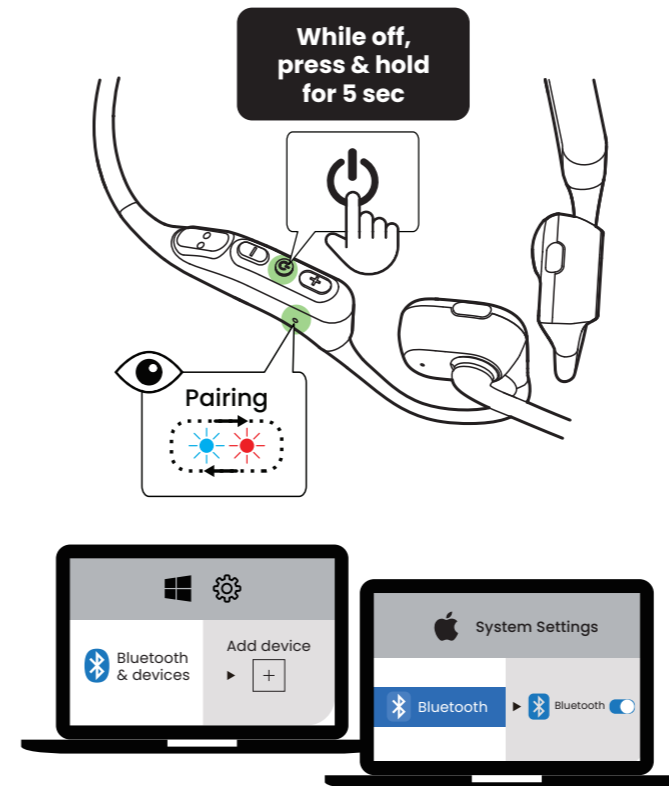
Icon	Function	LED
⌚	Pairing	🌟🌟🌟
⏻	On / Off	🌟/🌟
🔄	Reconnect	🌟
🔊	Volume Up	🌟
🔇	Volume Down	🌟

## Connecting to PC

Anschließen an den PC | Connexion au PC |  
Collegamento al PC | Conectar al PC | PCへの接続

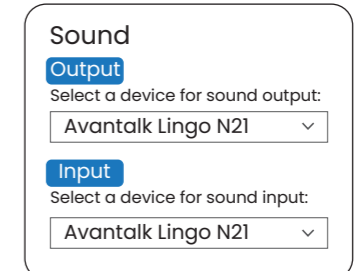
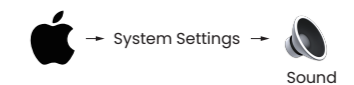
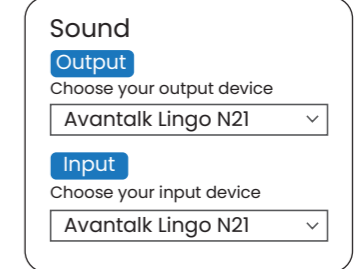
### 1 Pair & Connect

Koppeln & Verbinden | Appairer & Connecter | Accoppiare &  
Connettere | Emparejar & Conectar | ペアリング & 接続



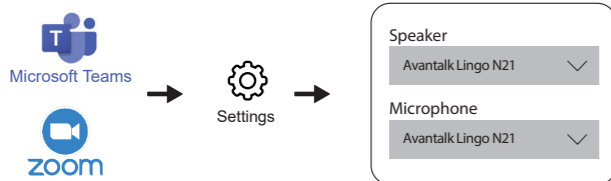
### 2 Change PC Sound Settings

PC-Toneinstellungen ändern | Modifier les paramètres audio du PC |  
Modificare le impostazioni audio del PC | Cambiar la configuración  
de sonido del PC | PCの音声設定を変更



### 3 Change Software Sound Settings

Software-Klangaus Einstellungen ändern | Modifier les paramètres  
audio du logiciel | Modificare le impostazioni audio del software |  
Cambiar la configuración de sonido del software | ソフトウェアのサウ  
ンド設定を変更する



**NOTE:** For PCs using Windows 10 or older,  
please select "Avantalk Lingo N21 Hands-Free"  
in both your PC's & software's sound settings.

**DE:** HINWEIS: Für PCs mit Windows 10 oder älter wählen  
Sie bitte "Avantalk Lingo N21 Hands-Free" sowohl in den  
Soundeinstellungen Ihres PCs als auch in den  
Soundeinstellungen der Software.

**FR:** REMARQUE : Pour les PC utilisant Windows 10 ou une  
version antérieure, veuillez sélectionner "Avantalk Lingo  
N21 Hands-Free" à la fois dans les paramètres sonores  
de votre PC et dans les paramètres sonores du logiciel.

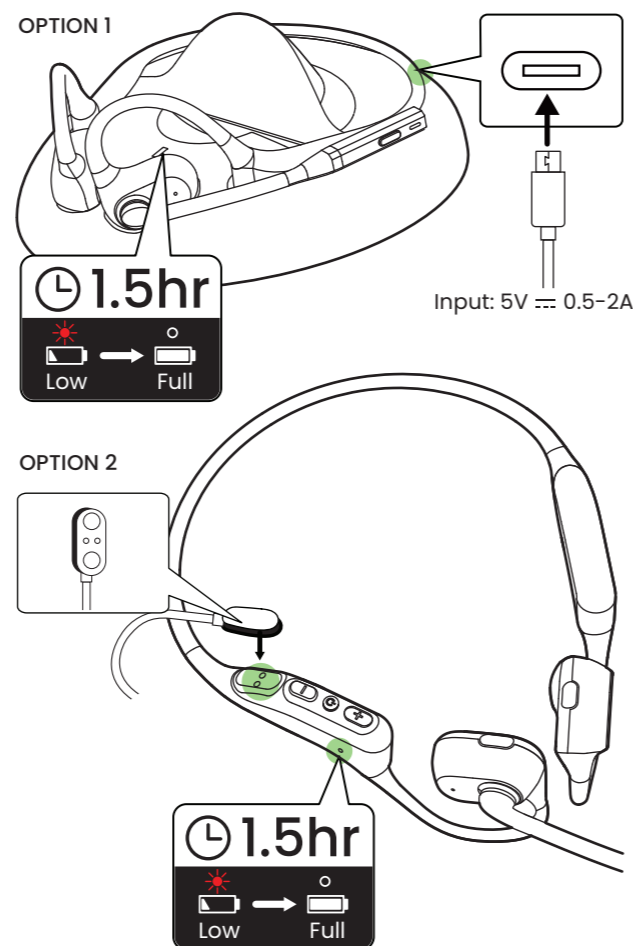
**IT:** NOTA: Per i PC che utilizzano Windows 10 o versioni  
precedenti, selezionare "Avantalk Lingo N21 Hands-Free"  
sia nelle impostazioni audio del PC che nelle  
impostazioni audio del software.

**ES:** NOTA: Para los PC con Windows 10 o versiones  
anteriores, seleccione "Avantalk Lingo N21 Hands-Free"  
tanto en la configuración de sonido de su PC como en  
la configuración de sonido del software.

**JP:** 注意: Windows 10 またはそれ以前のバージョンを使用して  
いるPCの場合、PCおよびソフトウェアの音声設定で「  
Avantalk Aria 3 Hands-Free」を選択してください。

## Charging

Aufladen | Charge | Ricarica | Cargat | 充電



## Contact Us

Kontaktieren Sie uns | Contactez-nous |  
Contattaci | Contáctenos | お問い合わせ

[avantalk.com/submit-a-ticket](https://avantalk.com/submit-a-ticket)

[support@avantalk.com](mailto:support@avantalk.com)

Country	Phone Number	Hours	Days
US	+1 800 232 2078	9am-6pm PST	Mon-Fri
CA	+1 800 232 2078	9am-6pm PST	Mon-Fri
UK	+44 208 068 2023	9am-6pm GMT	Mon-Sat
DE	+49 322 2109 7297	11am-9pm CET	Mon-Sat
FR	+33 17 634 0312	11am-9pm CET	Mon-Sat
IT	+39 069 4803 330	9am-6pm CET	Mon-Sat
ES	+34 93 1786 261	9am-6pm CET	Mon-Sat
AU	+61 2 8310 9897	11am-7pm AEST	Mon-Fri

[avantalk.com/support/lingo-n21](https://avantalk.com/support/lingo-n21)

## EC REP

**EU Importer and Responsible Person:** Avantree Europe Z O.O.  
Ul. 20Inierzy I Dywizji Wojska  
Polskiego 78a/2 84-230 Rumia,  
Pomorskie, Poland  
+48 22 307 25 37  
support-eu@avantalk.com

**US Importer:** Avantree Corporation  
San Jose, California 95119 USA  
+1 800 232 2078  
support@avantalk.com

**UK Importer:** Avantree Limited  
Watford, WD180 0HQ UK  
+44 20 8068 2023  
support-uk@avantalk.com

**Manufacturer:** Avantronics Limited  
Luohu District, Shenzhen 518000  
China  
+86 755 8228 5022  
support@avantronics.com

**Battery Manufacturer and Responsible Person:** Shenzhen Mitacbattery technology Co., LTD  
5 Floor 1 Building, No.47,Kengwei Avenue, Shangwu Community  
Shiyon Street, Baoan District, Shenzhen, Guangdong, P.R. China  
+86 135 1069 6941 liutuotuo@stxl.wecom.work



Model No.: ATBH-NB21M  
FCC ID: WJ5-ATBH-NB21M  
IC: 8475A-NB19M  
Made in China

Z-PKQG-NB21M-V0